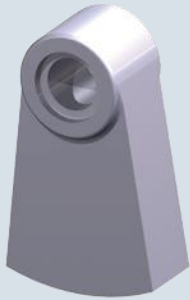


Cement Industry

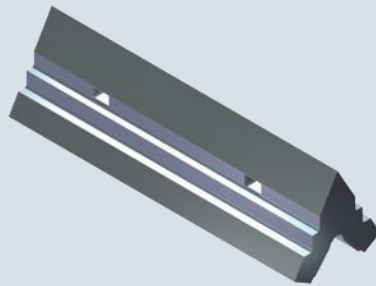
According to customers requirements with STEECO know-how

Page 1of2

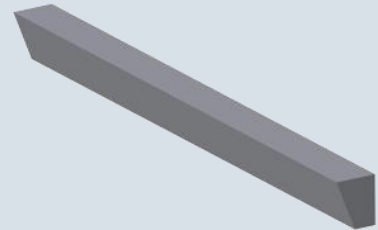
Hammer



Amboss

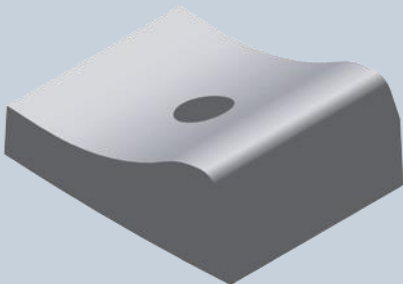


Grate Bars

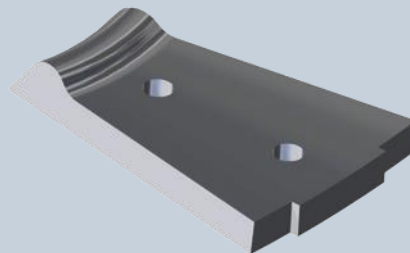


cast or forged from 15kg – 260kg

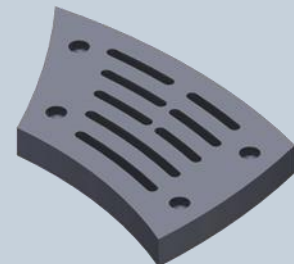
Lifting Plates



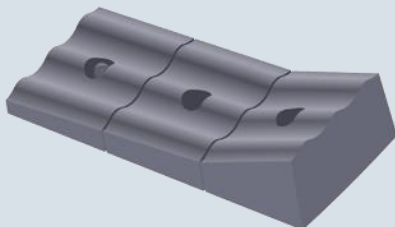
Tailboard Plates



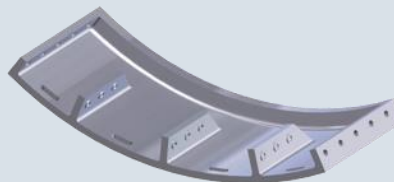
Slit Plates



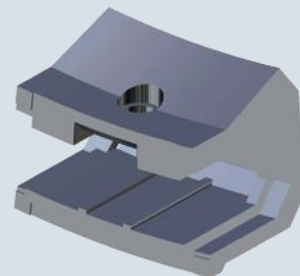
Sorting Plates



Inlet Throughs, 3-part



Kiln Outlet Segments

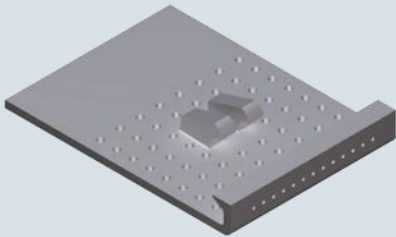


Cement Industry

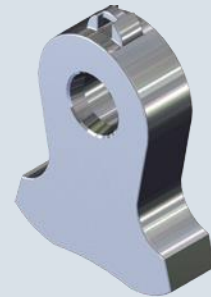
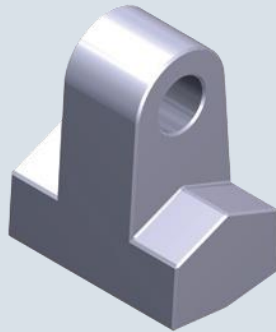
According to customers requirements with STEECO know-how

Page **2 of 2**

Grate Plates

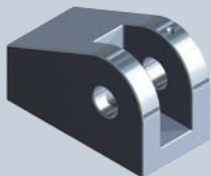


Clinker Hammers



cast or forged from 8-950kg

Cas Racket Heads



special nodular cast iron